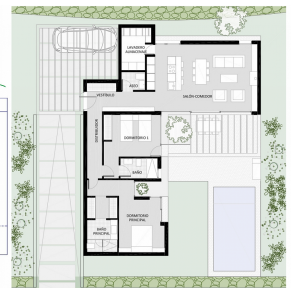




The Natural Way of Living

SUPERFICIES ÚTILES VIVIENDA 2 DORMITORIOS	
SALÓN COMEDOR	36,6 m ²
DORMITORIO PRINCIPAL	17,7 m ²
DORMITORIO 1	13,9m ²
BANO PRINCIPAL	5,1 m ²
BANO	3,9 m ²
ASEO	2,2 m ²
VESTIBULO	6,5 m ²
DISTRIBUIDOR	5,3 m ²
LAVANDERO	6,3m ²
TOTAL SUP. ÚTIL	95,5 m ²
TOTAL SUP. CONSTRUIDA	124,7 m ²



Location :	Golf Altaona	Swimming pool :	Private	House area :	200,30 m ²
Sales type :	New build	Garden :	Private	Plot area :	353 m ²
Bedrooms :	2	Orientation :	South	Terraces area :	27,80 m ²
Bathrooms :	3	Views :	Golf course	Beach :	30 km

- | | | |
|--------------------|-----------------------|-------------------------------|
| ✓ Air conditioning | ✓ Partially furnished | ✓ Fitted wardrobes |
| ✓ Utility room | ✓ Landscaped garden | ✓ Underfloor heating in house |
| ✓ Dressing room | ✓ Interior lighting | ✓ Exterior lighting |

These villas have been designed to ensure a natural way of living. They are surrounded by large green zones and give you direct access to the mountain trails behind. The beauty of the surrounding nature can be peacefully enjoyed from the spacious, sunny, south facing garden and terraces with endless views over the golf resort, lakes, and distant countryside. Thanks to the large glass windows, the views can also be enjoyed throughout the property. In addition, the landscaped garden can be accessed from various rooms. Living here really creates...